



# WHERE WE'RE HEADED

- Public safety is #1
- Improve hiring and diversity





# WHERE WE'RE HEADED

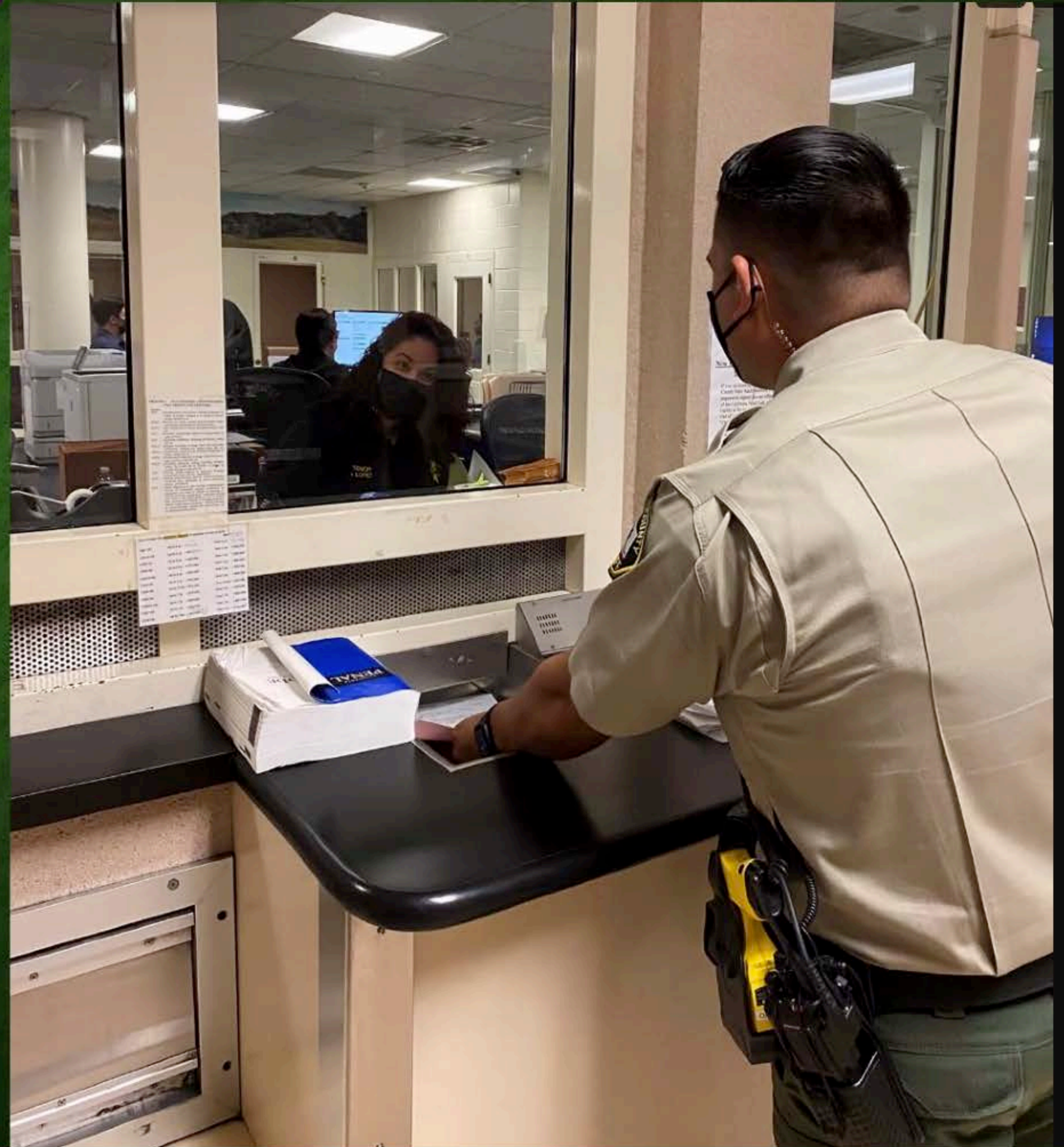
- Community-based policing
- Embrace constructive oversight





# WHERE WE'RE HEADED

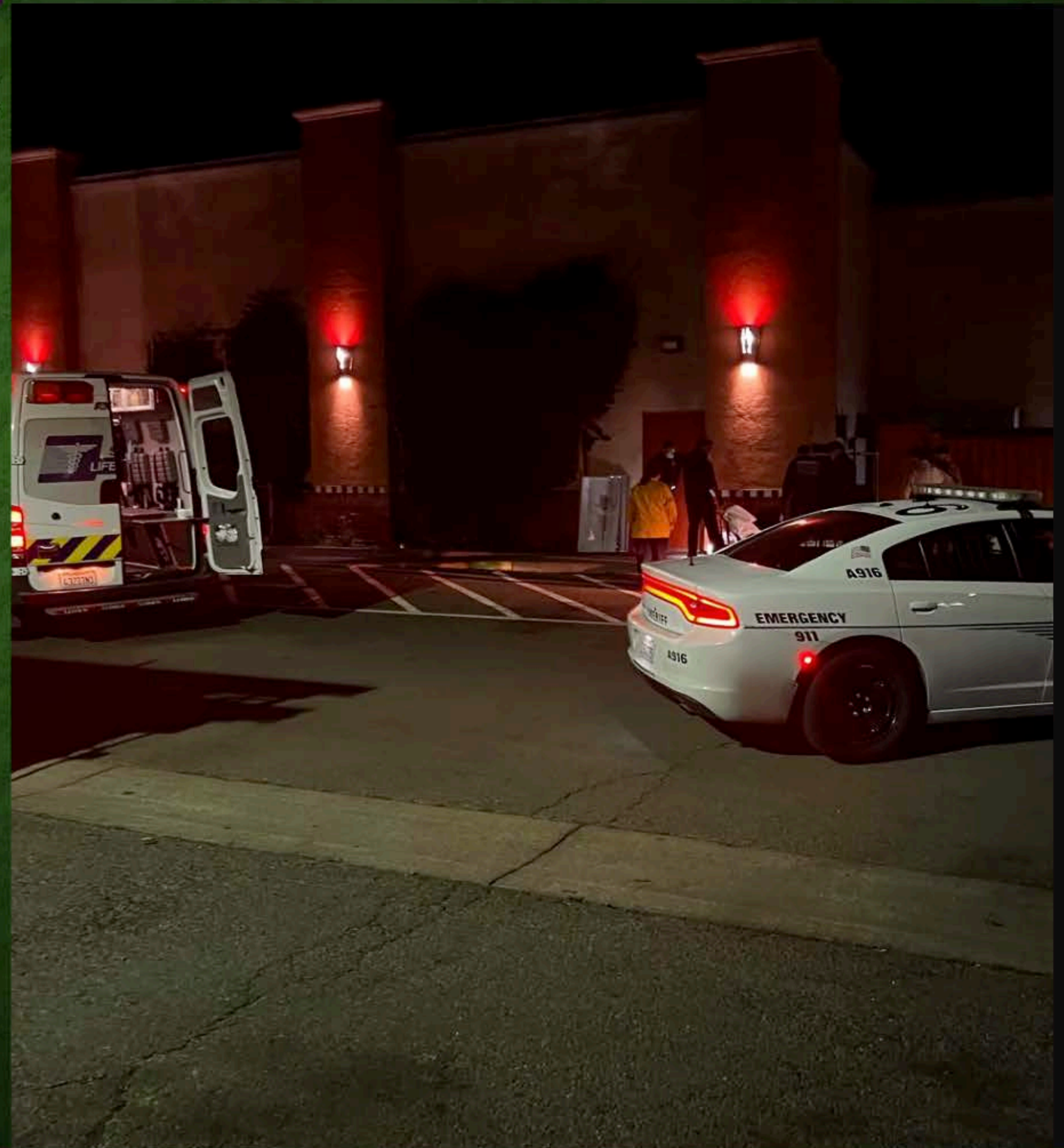
- Improve Detention services





# WHERE WE'RE HEADED

- Improve mental health response





# WHERE WE'RE HEADED

- Maintain excellent disaster response





# WHERE WE ARE\*

- \$209,497,550 budget
- 663 employees
- Patrol, detention, court security, coroner, civil, search & rescue

\*FY 2021-2022



# WHERE WE ARE\*

- \$209,497,550 budget
- 663 employees
- Patrol, detention, court security, coroner, civil, search & rescue

\*FY 2021-2022



# PATROL

- 1,708 arrests
- 30,261 911 calls
- 55,984 calls for service
- 11 minutes, 12 seconds response time (P1)
- 1.37 deputies per 1,000 residents





# DETENTION

- 11,029 bookings
- 732 Average Daily Population
  - 48% mental health diagnosis
  - 38% homeless
- 47 inmates treated with MAT
- 79 classes offered



# STAY CONNECTED

Sign up for alerts at [www.nixle.com](http://www.nixle.com)